



sparks ellison

1 Paulson Close, Chandler's Ford, SO53 1HR

£500,000

A charming three bedroom detached family home situated in an enviable central Chandler's Ford location offering easy access to the town centre, local shops and Hiltingbury Recreation Ground. The property is offered for sale with no forward chain and, offers great potential for extension subject to the relevant permissions. Internally, the property benefits from three good size bedrooms along with a sitting room, separate dining room, kitchen, and cloakroom. Externally, there are well presented and cared for gardens to the front and rear, the rear garden providing excellent private space. There is also the added bonus of a detached double garage and Paulson Close sits within catchment for Thornden School.

ACCOMMODATION

GROUND FLOOR

Entrance Hall:
Stairs to first floor.

Cloakroom:
WC, wash hand basin.

Sitting Room:
17' x 13'4" (5.19m x 4.07m) Fireplace surround and hearth extending to side.

Kitchen:
12'6" x 9'11" (3.81m x 3.02m) Space for cooker, space and plumbing for washing machine, space for tumble dryer, space for fridge/freezer, built in larder cupboard.

Dining Room:
10'9" x 9'11" (3.28m x 3.01m) Doors to rear garden.

FIRST FLOOR

Landing:
Built in storage cupboard.

Bedroom 1:
15'5" x 9'11" (4.69m x 3.03m) Built in double wardrobe.

Bedroom 2:
15'1" x 11'1" (4.60m x 3.37m) Built in cupboard.

Bedroom 3:
10'6" x 9'1" (3.19m x 2.77m)

Bathroom:
Comprising bath with mixer tap and shower attachment, wash hand basin, wc.

OUTSIDE

Front:
Paved patio area, flower and shrub beds, mature bushes and shrubs. Driveway leading to garage. Side pedestrian access to rear garden.

Rear Garden:
Split in to two distinct areas. The first measures approximately 49' x 17' and is laid to paved patio with additional patio area to left hand side of property, outside tap, garden shed. There is

a further beautifully presented and private garden area measuring approximately 40' x 40' max and comprising area laid to lawn, mature planted beds.

Garage:
With twin electric rollover doors, power and light and door to rear garden.

OTHER INFORMATION

Tenure:
Freehold

Approximate Age:
1960's

Approximate Area:
1172sqft/108.8sqm

Sellers Position:
No forward chain

Heating:
Gas central heating

Windows:
Ground floor - UPVC double glazed windows. First floor - Aluminium secondary glazing

Loft Space:
Partially boarded with ladder and light connected

Infant/Junior School:
Chandler's Ford Infant/Merdon Junior School

Secondary School:
Thornden Secondary School

Council Tax:
Band D

Local Council:
Eastleigh Borough Council - 02380 688000

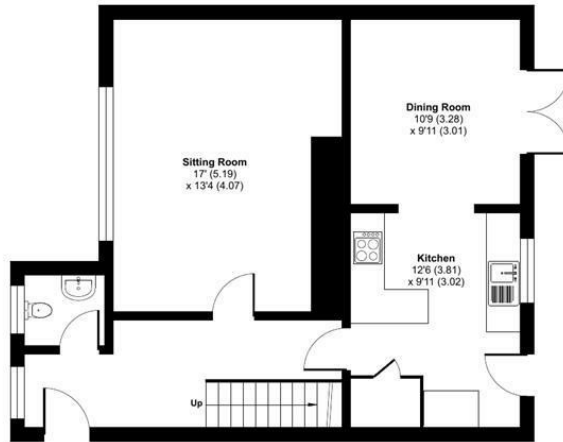
Agents Note:
If you have an offer accepted on a property we will need to, by law, conduct Anti Money Laundering Checks. There is a charge of £60 including vat for these checks regardless of the number of buyers involved.



Ground Floor = 609 sq ft / 56.5 sq m
First Floor = 563 sq ft / 52.3 sq m
Total = 1172 sq ft / 108.8 sq m
For identification only - Not to scale



FIRST FLOOR



GROUND FLOOR



Energy Efficiency Rating		
	Current	Potential
Very energy efficient - lower running costs		
(92 plus) A		
(81-91) B		
(69-80) C		
(55-68) D		
(39-54) E		
(21-38) F		
(1-20) G		
Not energy efficient - higher running costs		
England & Wales	EU Directive 2002/91/EC	

94 Winchester Road, Chandler's Ford, Hampshire, SO53 2GJ

Sales: t: 02380 255333 e: property@sparksellison.co.uk

Lettings: t: 02380 018518 e: lettings@sparksellison.co.uk

While we endeavour to make our sales particulars fair, accurate and reliable, they are only a general guide to the property and, accordingly, if there is any point which is of particular importance to you please contact the office and we will be pleased to check it for you, especially if you are contemplating travelling some distance to view the property. These approximate room sizes are only intended as general guidance. You must verify the dimensions carefully before ordering carpets or any built in furniture. Please note we have not tested the services or any of the equipment or appliances in this property, accordingly we strongly advise prospective buyers to commission their own survey or service report before finalising their offer to purchase. These particulars are issued in good faith but do not constitute representations of fact or form part of any offer or contract. The matters referred to in these particulars should be independently verified by prospective buyers or tenants. Neither Sparks Ellison nor any of its employees or agents has any authority to make or give any representation or warranty whatever in relation to this property. Your home is at risk if you do not keep up repayments on a mortgage or other loan secured on it. Written quotations available on request. All loans secured on property. Life assurance usually required.



